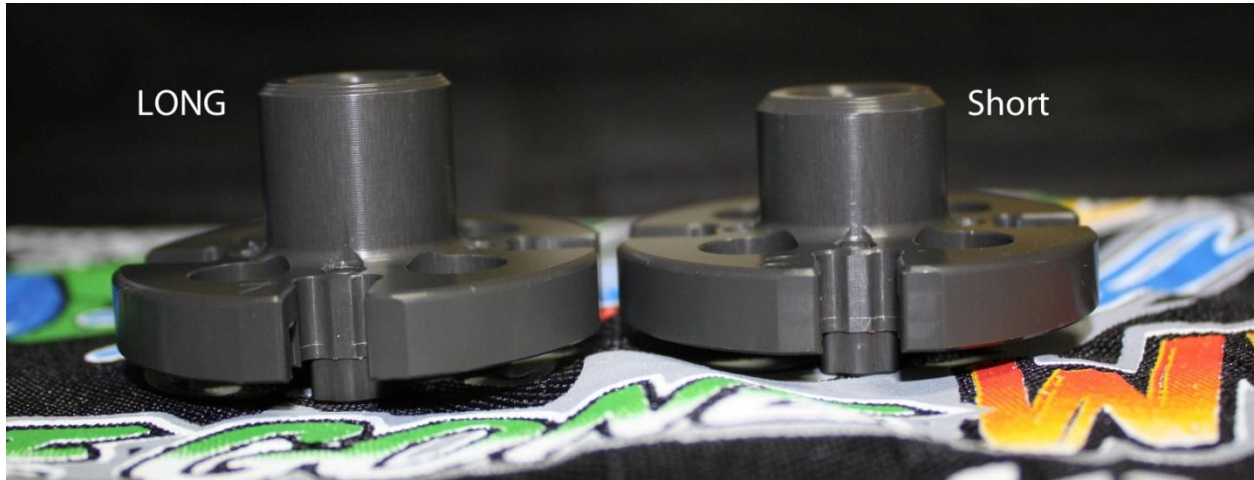
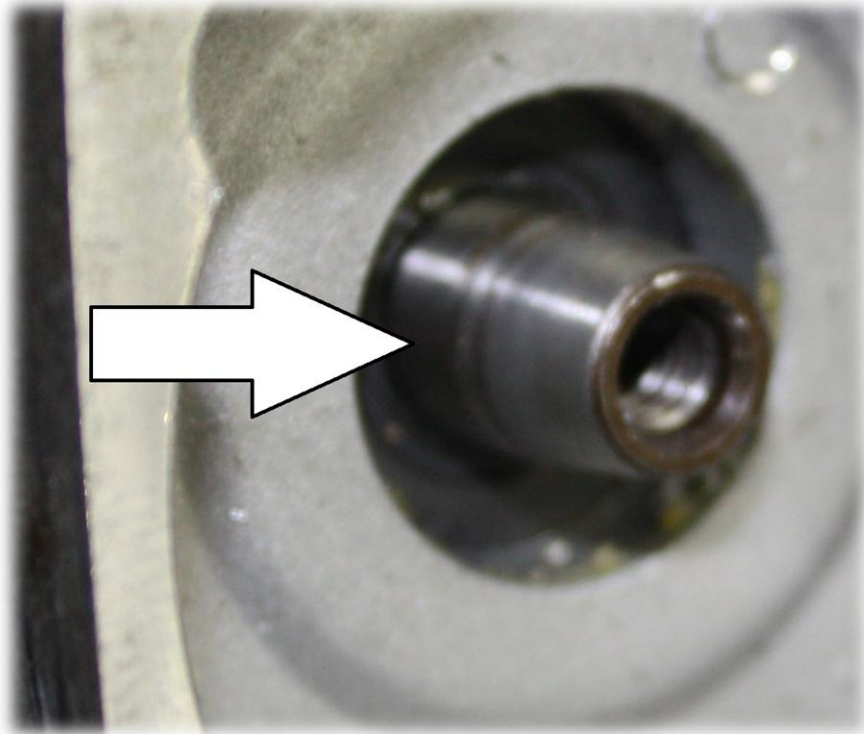


Turtle Racing Snapper Clutch

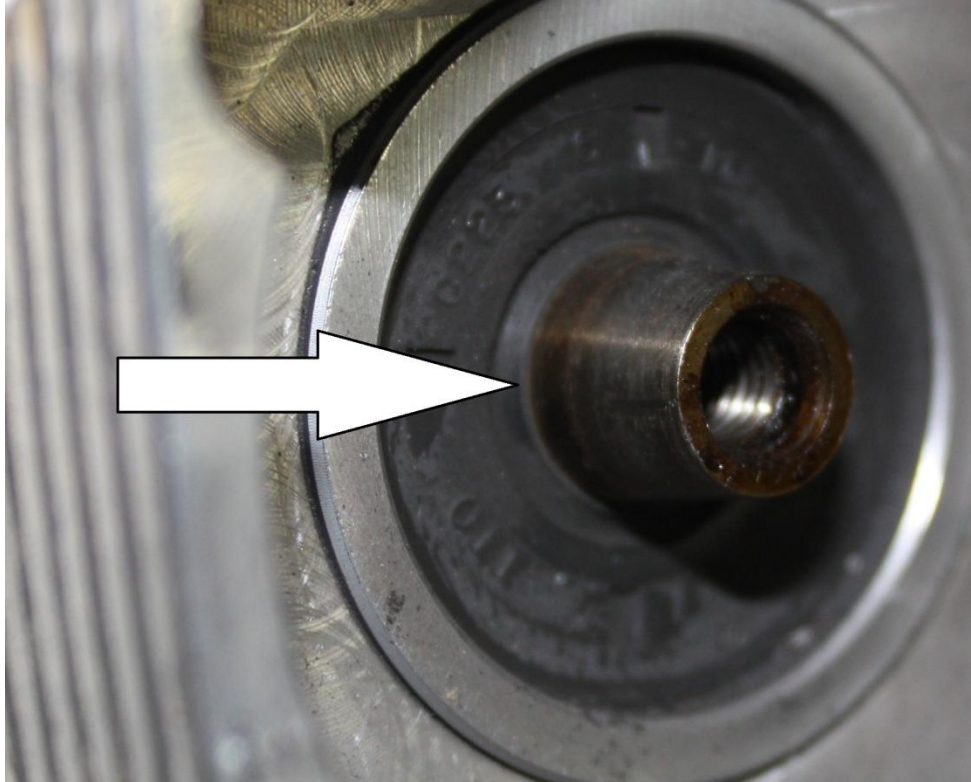
“Long” (3001) and “Short” (3002)



Long and Short describes the length of the base as shown in picture.



This picture illustrates the use of the Long (3001) base. You can actually see a section of the crank that is “straight”, not tapered.



This picture illustrates the use of the Short (3002) base. There is no visible “straight” section of the crank.